

# AI 5M IP MFZ IR Flat Dome

NVD13-75-R

## Features

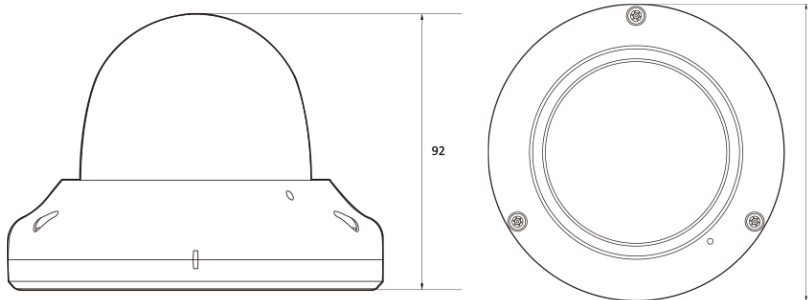
---

- 5MP AI Camera
- Supports Intelligent Video Analysis Events (Line Crossing, Intrusion, Queue Management, etc.)
- Maximum Resolution 2592 (Horizontal) X 1944 (Vertical) / 30fps
- Horizontal Field of View 98 degrees (Wide) ~ 32 degrees (Zoom)
- 5x Optical Zoom
- Day & Night(ICR)/IR Visibility up to 25 meters
- Backlight Compensation (WDR)
- SD/SDHC/SDXC Memory Slot
- PoE IEEE 802.3af/Class3
- IP67/IK10
- Built-in Microphone



## Dimension (mm)

---



## Specification

### Video

|                             |                                    |
|-----------------------------|------------------------------------|
| Image Sensor                | 1/2.8" 5.69M CMOS                  |
| Channels                    | 1                                  |
| Total Pixel                 | 2704(H) X 2104(V)                  |
| Max Resolution              | 2592(H) X 1944(V)                  |
| MIN. Illumination           | COLOR: 0.08Lux<br>BW: 0Lux with IR |
| Only installer Video Output | 1 [CVBS 1.0V p-p (75Ω)]            |
| S/N(signal/noise) Ratio     | 50dB                               |
| Scanning Mode               | Progressive Scan                   |

### Lens

|                   |   |
|-------------------|---|
| Focal Length      | 2.7~13.5mm                                  |
| Aperture          | F1.4  |
| Lens Type         | Motorized_Varifocal                         |
| IRIS Type         | P-IRIS                                      |
| Horizontal Angle  | D:39.4 ~125.5 , H:31.6 ~98.3 , V:23.5 ~70.8 |
| Pan / Tilt / Zoom | Zoom :X5 Optical                            |

### Operational

|                          |   |
|--------------------------|---|
| Shutter Speed            | Auto / Manual (1/15 ~ 1/32000) Anti-Flicker Slow Shutter(1/2,1/3,1/5,1/6,1/7.5, 1/10) |
| Auto Gain Control (AGC)  | Auto  |
| Day & Night              | TDN (True Day & Night)  |
| Digital Noise Reduction  | 3D DNR  |
| Wide Dynamic Range (WDR) | WDR(2x)   |
| Dynamic Range            | 120dB or above  |
| LEDs                     | H2IR  |
| LED Distance             | 80ft(25m)   |
| Privacy Zone             | Yes   |
| Function                 | Motion-Detection Mirror&Flip  |

### Intelligent Video Analytic

|                               |   |
|-------------------------------|---|
| AI Intelligent Video Analytic | Yes   |
| VCA Pro AI                    | Intrusion Detection Zones&lines Tamper Detection Appear Filter Disappear Filter Dwell Filter Enter Filter Exit Filter Stopped Filter Counting Counting Lines Object Color Direction Filter Logical Rules Tailgating Filter DL People Tracker DL Object Tracker Metadata |

Encoder (video & audio)

|  |  |
|--|--|
| Video Compression                      | H.264 H.265 MJPEG  |
| Support Resolution                     | H.265 :<br>2592x1944/2560x1440/1920x1080/1280x720/800x600/704x576/704x480/640x480/640x360/352x288/352x240<br>H.264 :<br>2592x1944/2560x1440/1920x1080/1280x720/800x600/704x576/704x480/640x480/640x360/352x288/352x240<br>MJPEG : 1920x1080/1280x720/800x600/768x432/704x576/704x480/640x480/640x360/352x288/352x240 |
| Intelligent Codec                      | Yes  |
| Multiple Profile Streaming Performance | Triple Streaming(3rd Only MJPEG)   |
| Video BitRate                          | 100Kbps~25Mbps   |
| Bitrate Control                        | Multi Streaming CBR/VBR at H.264,H.265 (Controllable frame rate and Bandwidth)   |
| Video Bitrate extra comment            | Multi-rate for Preview and Recording   |
| Audio Compression                      | G.711 ulaw   |
| Special Feature                        | Dynamic ROI(Region of Interest)  |

I/O & Event

|                    |   |
|--------------------|---|
| Audio In / Out     | Mic /1 Line Output  |
| Alarm In / Out     | 1 Line/1 Line   |
| Mic                | Yes   |
| Event Trigger      | Motion Alarm Network Disconnection Temperature Critical Illegal Login Schedule Sensor Detection |
| Event Notification | FTP E-Mail Alarm Out SD Card  |

Network

|                                 |  |
|---------------------------------|--|
| Ethernet                        | RJ45 (10/100Base-T)  |
| Protocol                        | TCP/IP UDP AutoIP RTP(UDP/TCP) RTSP NTP HTTP HTTPS SSL DNS DDNS DHCP FTP SMTP ICMP SNMPv1/v2/v3(MIB-2) ONVIF |
| Security                        | HTTPS(SSL) IP filtering 802.1x   |
| Application Programming I/F     | CGI API ONVIF  |
| Web viewer                      | MS Edge® Google Chrome®  |
| Video management software (VMS) | DW Spectrum® IPVMS   |
| Support languages               | English Korean Japanese  |
| Edge storage                    | Micro SD Micro SDHC Micro SDXC   |
| SD Card Socket                  | 1  |

Electrical

|                   |   |
|-------------------|---|
| Power Requirement | Adaptor is not included DC12V PoE IEEE 802.3af Class3 |
| Power consumption | DC Max: 10.4W PoE Max: 12.5W                          |







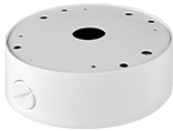

Environmental

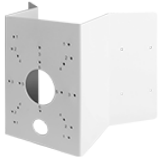
|                       |                           |
|-----------------------|---------------------------|
| Operating Temperature | -20°C ~ 50°C              |
| Cold Start            | No                        |
| Operating Humidity    | 10-90% RH(Non-Condensing) |
| Vandal Proof Casing   | IK10                      |
| IP Rating             | IP67                      |
| Other Certification   | FCC CE ROHS UL KC         |

Mechanical

|                        |                      |
|------------------------|----------------------|
| Housing Model          | VD13                 |
| Housing                | Outdoor Dome         |
| Material               | Aluminum-Die Casting |
| Color                  | White                |
| Dimensions (W x D x H) | 125mm<br>92mm        |
| Weight                 | 0.52kg               |

Compatible Accessories

|  |  |  |   |
|--|--|--|---|
|  <p><b>BJC11</b><br/>JUNCTION BRACKET</p> |  <p><b>BC10 NPT</b></p>                 |  <p><b>GP02</b><br/>Gang Bracket</p>           |  <p><b>BJC03</b><br/>Junction Bracket</p>  |
|  <p><b>BW10</b><br/>Wall Bracket</p>      |  <p><b>BC10</b><br/>Ceiling Bracket</p> |  <p><b>BJC09</b><br/>Wall Junction Bracket</p> |  <p><b>BP01</b><br/>Pole Mount Bracket</p> |



**BCO01**

Corner Mount Bracket