

# 5M HD Analog IR Outdoor Dome

CVD5-25-R

## Features

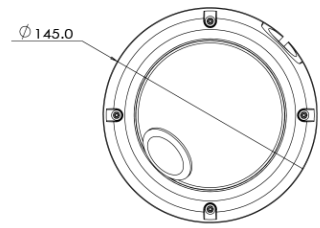
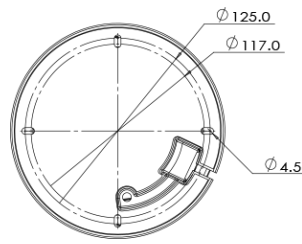
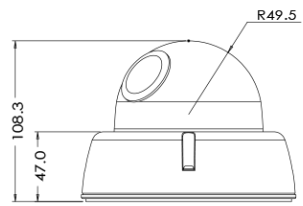
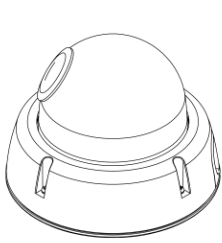
---

- Analog High Definition Universal over Coax Technology
- Sens-up Super Low Light Technology
- 1/2.8" CMOS Sensor
- Max 1944P Resolution at 12.5/20fps
- Wide Dynamic Range (WDR)
- MFZ P-Iris Lens from 2.7~13.5mm
- Smart IR™ with Intelligent Camera Sync. 100ft Range
- Smart DNR™ 3D Digital Noise Reduction
- Highlight Masking Exposure (HME)
- True Day/Night Mechanical IR Cut Filter
- Programmable Privacy Zones
- Auto Gain Control (AGC)
- Back Light Compensation (BLC)
- Dynamic Range Compressor (DRC) Reveals Low Light Detail
- Auto White Balance (AWB)
- IP67 Certified (Weather Resistant)
- OSD Control via Coax Cable using UTC



## Dimension (mm)

---



## Specification

### 비디오

이미지 센서	1/2.8" 5M CMOS
채널 수	1
총 화소	2704(H) x 2104(V)
화소	2608(H) x 1960(V)
최대 해상도	2592 x 1944
최저저도	Color(at Day) : 0.08Lux (F1.4, 30IRE) B/W(at Night) : 0 lux(With IR)
영상 출력	AHD or TVI or CVI or CVBS
설치자용 비디오 출력 (2nd Video Out)	CVBS
신호 기술	Max 5M Megapixel Universal
동기화	Internal
주사 방식	Progressive Scan

### 렌즈

초점 거리	2.7~13.5mm
조리개	F1.4
렌즈 타입	Vari-Focal
IRIS 제어	P-IRIS
화각	D:136 , H:102.2 , V:73.9 (Wide) D:40.5 , H:31.4 , V:23.3 (Tele)

### 카메라 기능

전자식 셔터 속도	1/30(25) - 1/30,000 Slow Shutter (OFF-x32)
자동 이득 조절	Yes
주간 야간 모드	TDN (True Day & Night)
노이즈 제거	2D/3D DNR
와이드 다이내믹 레인지	Double Scan WDR
다이내믹 레인지	120dB or above
LED 수량	24IR
LED 도달거리	100ft
감마	0.5
기타 기능	Motion Detection Privacy Zone White Balance Backlight Mirror & Flip

### 입출력 & 이벤트

오디오 입출력	No
알람 입출력	0/1
RS485	PELCO D

입출력 & 이벤트

UTC 내장	UTC
UTP 내장	No

전원

전원	DC12V / AC24V Dual Voltage DC12V AC24V
소비 전력	DC(LED OFF) :3.3W (275mA) DC(LED ON) : 5.9W (495mA) AC(LED OFF) :2.75W (200mA) AC(LED ON) :5.3W (360mA)



동작 환경

동작 온도	-20°C ~ 50°C
콜드 스타트	No
동작 습도	Less than 90%(Non-Condensing)
충격 대응	IK10
방진 방수 대응	IP67
인증	FCC CE ROHS

외관

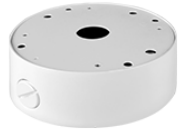
하우징 모델명	VD5
케이스 타입	Outdoor Dome
재질	Aluminum-Die Casting
색상	White
크기 (W X D X H)	145mm 108.3mm
무게	0.75

Compatible Accessories

 <p><b>BC09 NPT</b></p>	 <p><b>BJC02</b> Junction Bracket</p>	 <p><b>BW09</b> Wall Bracket</p>	 <p><b>BC09</b> Ceiling Bracket</p>
--	--	--	--



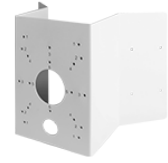
**GP02**  
Gang Bracket



**BJC09**  
Wall Junction Bracket



**BP01**  
Pole Mount Bracket



**BCO01**  
Corner Mount Bracket