

5M 4Ch
TOTAL
20MP

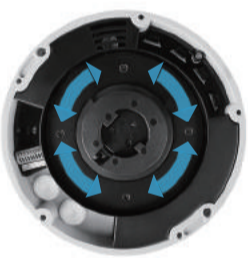
SURROUND MFZ



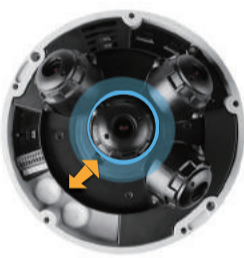
4 Sensor 5 Positioning

Flexible Sensors Arrangement

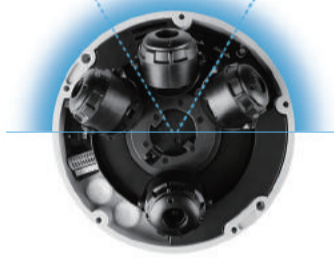
Easy to arrange 4 Magnetic Sensors through the Track.
You can get Vertical Top View through Center Position, and 180°, 270°, or 360° View of video.



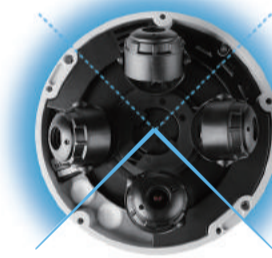
Magnetic Track



Center Position



180°



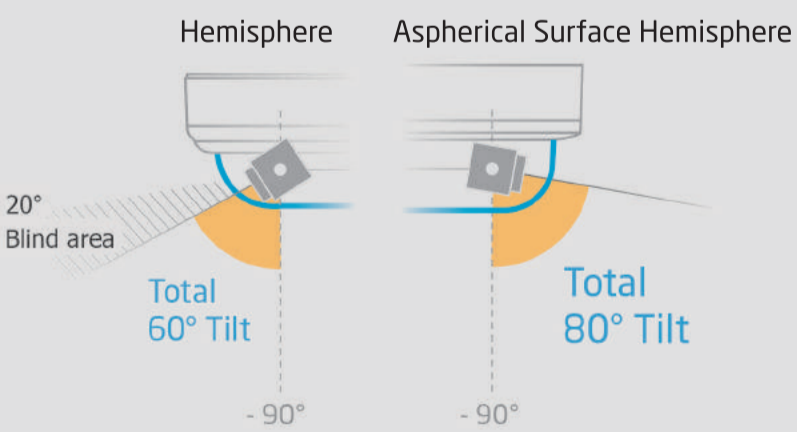
270°



360°

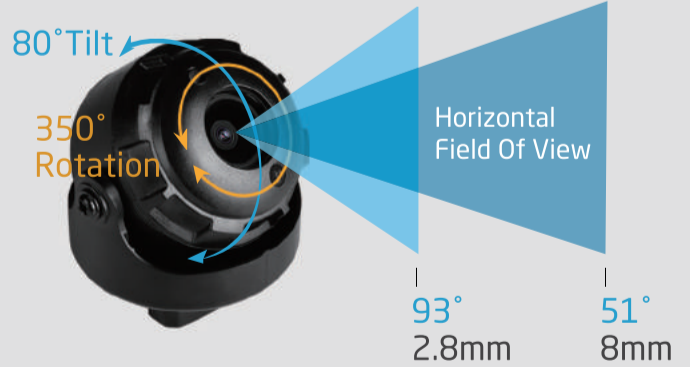
Extended Tilt Angle up to 80°

With Aspherical Surface Hemisphere, it can tilt up to 80° and minimize areas that are obscured.



MFZ Lens Module

User can tilt and rotation the module whatever angle they want. And adjust the varifocal lens.

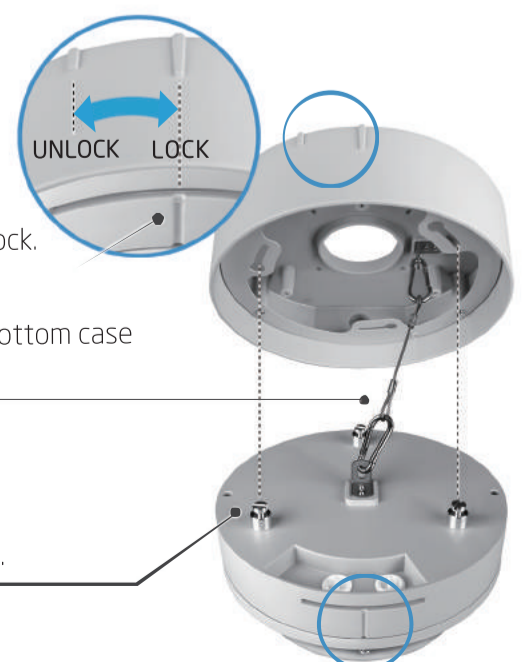


Simple Positioning by a magnet

With magnetic attachable design, the angle of 4 Sensors can be easily reposition as desired.



Easy Installation



③ Turn to Lock and Unlock.

① Fit the Bracket and Bottom case with Safety Wire.

② Tighten with a Screw.

5M 4Ch
TOTAL
20MP

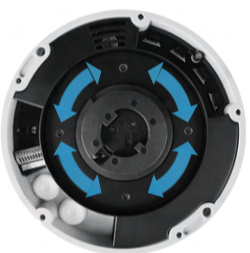
SURROUND MFZ



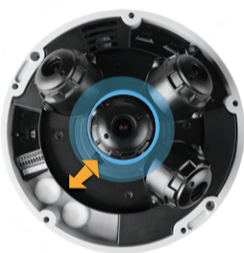
4 센서 5 앵글 설정

쉽고 유동적인 센서 배치

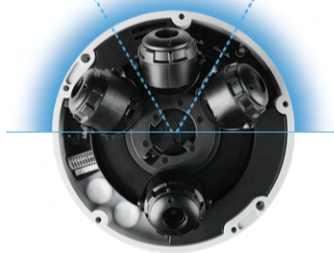
자석이 부착된 4개 센서를 트랙을 따라 쉽게 배치할 수 있습니다.
센서 한 개를 중앙으로 옮겨 촬영할 수 있는 수직 뷰 뿐만 아니라, 180°, 270°, 360° 뷰 까지 지원합니다.



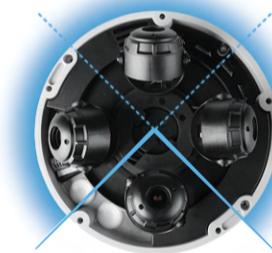
자석 트랙



중앙 배치



180°



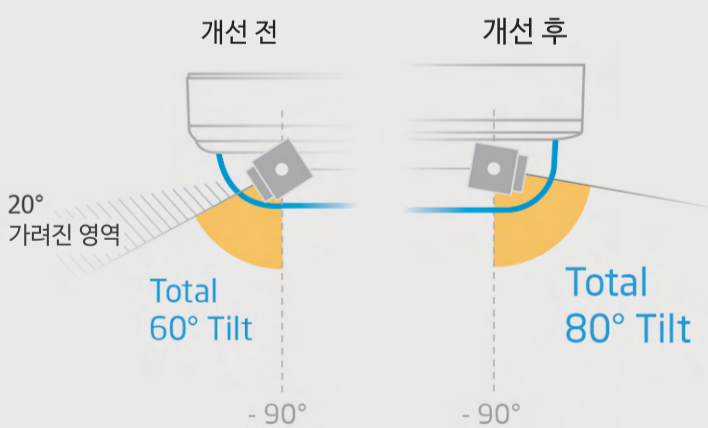
270°



360°

80° 까지 확장된 틸트 각도

비구면반구 돔을 사용해 가려지는 영역을 최소화 했습니다.



MFZ 렌즈 모듈

원하는 각도로 틸트와 팬 각도를 자유롭게 조정할 수 있습니다.
가변초점 렌즈를 통해 수평 화각이 51°에서 93°까지 지원됩니다

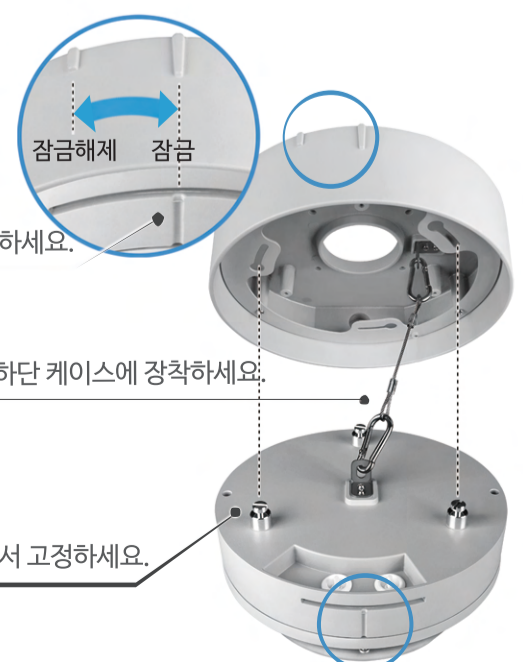


자석을 이용한 쉬운 앵글 설정

4개의 센서가 자석으로 연결되어 있어 원하는 방향으로 손쉽게 앵글을 설정할 수 있습니다.



쉬운 설치



③ 잠금 및 잠금 해제로 전환하세요.

① 안전 와이어를 브라켓과 하단 케이스에 장착하세요.

② 나사를 구멍에 넣고 돌려서 고정하세요.